



OFFICIAL CLUB
BROCHURE — 2021
2022



CONTENTS

Welcome	5
A Brief History	7
The Course	11
Take the Course Tour	12
Pro Shop	18
Game Improvement	19
Becoming a Member	21
Members' Golf	22
Reciprocal Golf	26
Beginners	31
Juniors	32
Visitors and Guests	34
Clubhouse	36
Weddings and Functions	38
Corporate Golf Days	43
Contact Us and Find Us	51



Mount Osmond Golf Club and Premier wish to thank the advertisers who appear in this publication for their support and wish them every business success. The contents of this brochure are believed to be correct at the time of printing, nevertheless, we cannot endorse and readers should not rely solely upon the accuracy of any statements or claims contained herein without prior consultation with the service provider.



14 Ellis St,
South Yarra VIC 3141

T 03 9028 5704
E info@premierpublishing.com.au
W www.premierpublishing.com.au



Welcome to our family!

Do you want a pharmacy that open
7 days a week until late at night?

Are you looking for a pharmacy that has
a variety of stock at a competitive price,
and good old fashion service included?

Some of our
services include:

Home Medication Review

Medication packing service

Living aids product stockist

Health advice

Fertility medicine agent

Vaccination service

Agent for compounding

Medication Review

Delivery service

Health Partners Pharmacy

And more...

Mention this ad and get a Corporate
Discount Card that entitles you to a
20% discount on most shop items*

*T&C's apply

We are a family owned and operated business with friendly
experienced pharmacists and staff aiming to provide our
customers the best price on our products and services with the
highest standard. We treat our customers as an extension of our
family so you will always feel welcomed and looked after.

Shop 1, 322 Greenhill Rd, Glenside, S.A., 5065
Ph: 0883799988 | Fax: 0883799199
Email: glensidelnpharmacy@gmail.com

Operating hours: 9am-10pm 7 days a week
(Closed Christmas day and Good Friday)



Welcome to **MOUNT OSMOND** GOLF CLUB

Only 15 minutes from the centre of
the CBD, Mount Osmond Golf Club is
blessed with glorious views of the City of
Adelaide, Mt Lofty Ranges and coastline.
The beautiful heritage clubhouse and
welcoming membership will give you a
golfing experience that has been delighting
our members since 1927.

Our wide undulating fairways, challenging
greens and stimulating course layout will
always make for a memorable round.
Corporate and social groups are welcome
and are promised an experience that will
live long in the memory.

Mount Osmond is also the perfect choice
as venue for weddings and other special
occasions with its spectacular natural
setting, outstanding food and beverage,
dedicated and professional staff offering
the best service imaginable.

Our Head Professional Ian Pritchard is on
hand to help you get the most from your
game and has an excellent reputation as
a tutor for golfers of any ability.

Come see why we are Adelaide's most
welcoming course, where good golf is
natural.



RESIDENTIAL, RETIREMENT + COMMERCIAL ARCHITECTS

We pride ourselves on producing innovative design solutions which develop each site's full potential. With an understanding of our client's needs and a careful evaluation of the site topography orientation, and authority regulations, each project becomes unique and an opportunity to be special.

Get in touch for your next project.



A BRIEF HISTORY

The fact that the Mount Osmond Golf Club has a history at all is testament to the determination of Mr Sydney Melbourne - the then district engineer of the council of Burnside in 1924.



If it wasn't for his vision and stubbornness the prime location where the club now proudly stands, 400 metres above sea level, would no doubt be part of the lower Adelaide Hills residential zone.

After the council declined his plan to create a public golf course, Mr Melbourne co-opted the support and spirit of other like-minded golf lovers and formed a syndicate to purchase the land. They then formed a company and in 1927 offered shares to the public.

The first Club President of the Mount Osmond Country Club Ltd was Mr E.W. Holden - later to become Sir Edward of Holden car fame.

We've had some well-known members too. Sir Donald Bradman and his wife both belonged to Mount Osmond for many years. Australia's most famous cricketer was also a gifted golfer, winning the Club Championship in 1935 and again in 1949.

The original clubhouse, opened in 1930, was designed to be a true 'Country Club', with accommodation, tennis courts, bowling greens, dining rooms and a swimming pool.



A little birdie told us our sales strategy is strong.

Richie Carter

p. 0408 939 333 | richie@carterpartners.com.au | carterpartners.com.au



RLA: 281247

All kinds of schemes were conceived and in some cases implemented, to allow the fledgling club to survive and grow. From 1927 and into the 50s sheep were very profitably grazed and penned on the course. The revenue from such schemes enabled club management to invest in equipment to care for the course.

During the war years, Mount Osmond's clubhouse was used as a convalescent hospital and the fairways and greens became a wilderness of wild oats and weeds.

After the war, member 'working bee' sessions slowly but surely restored the playing surfaces, and clubrooms, to their former high standards.

The Mount Osmond Golf Club was incorporated in 1957 and the newly-formed club began the process of buying the shares of the original company - a task that was amicably completed by 1965.

It has always been the club's aim to provide the best golfing experience possible for its members and investment has continued to this end.

In 1963 a four million-gallon reservoir was built, guaranteeing the necessary care for fairways and greens, and ensuring Mount Osmond remained green and leafy all year round.

Today over 1,100 members enjoy the superb playing and leisure facilities that you will find at Mount Osmond Golf Club. We have a club that while remaining current and up-to-date is also traditional and a golfing venue of which our founder Mr Melbourne would still be suitably proud.





HT CAPITAL

Time to review your home loan? You could save enough to pay for **your golf membership** by refinancing.



Give the team at HT CAPITAL a call to discuss your options.

p. 08 8311 3714 | info@htcapital.com.au |

htcapital.com.au



THE COURSE

Our 18 hole course is located in the Adelaide foothills with glorious views of the city of Adelaide, Mt Lofty Ranges and coastline.

Our course has a challenging layout which represents a fair test to every level of player. It plays 5,567 metres off the blue men's tees, with a par of 70.

So how to score well around here? Who better to ask than our resident professional, Ian Pritchard.

Ian says: "Mount Osmond isn't overly long in its length, so course management is essential."

"Not every hole is a driver hole, you need to take some irons off the tee. Certainly the key area is the greens."

"You get to use all your game around a course like this and need to have a variety of golf shots in your repertoire to play your best."

If you are not playing at your best, do not despair. The scenery is breathtaking and one of the unique attractions at Mount Osmond is the abundant wildlife, from the Rainbow Lorikeet to the local koalas, who are a common sight around the course.

TAKE THE COURSE TOUR

We hope you enjoy your time with us at the Mount Osmond Golf Club. Here are a few useful tips and course notes from our PGA Head Professional Ian Pritchard which should help you make the most of your round if you have never visited us before.

HOLE 1, 326 metres, par 4

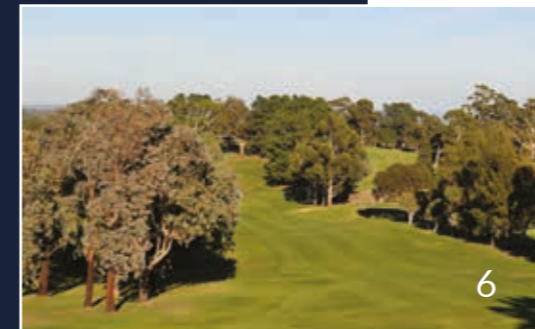
The opening hole is a slight dogleg to the right. It's important to keep your tee shot left of centre on the fairway to open up the green for your second shot. Your approach will likely be from a slightly hanging lie with the ball below your feet from about 100 metres. Savour the views when you get to the green.

HOLE 2, 168 metres, par 3

The first short hole of the round plays slightly uphill and generally into the breeze so you may want to take an extra club. Be wary of the large pot bunker on the front right of the green.

HOLE 3, 434 metres, par 4

Ranked the hardest hole on the course for a reason, this tough par 4 used to be a par 5. The brand new green and bunker layout will require an accurate approach shot in. The new bunkers on the left are quite intimidating, so make sure you are aiming to the right of the green to avoid a lot of trouble.



HOLE 4, 162 metres, par 3

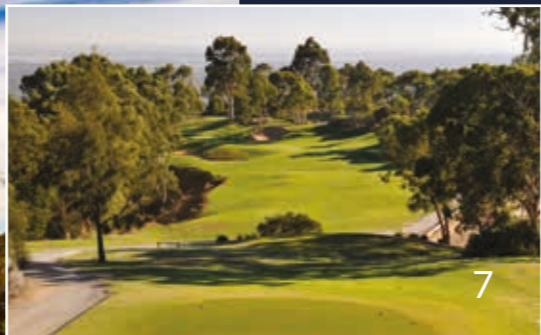
Straight par 3 with water on the right. The green is well protected by bunkers and not always easy to find. Allow for the left-to-right prevailing wind.

HOLE 5, 340 metres, par 4

Hole doglegs left. You need to be slightly right of centre with the tee shot to avoid the fairway trap on the corner of the dogleg. The average player will probably be left with an 8 or 9 iron into the green. Avoid going left of the green at all costs, as it is very difficult to get up and down from there.

HOLE 6, 473 metres, par 5

Uphill par 5 with a bunker on the left and out of bounds on the right. This is a hole that even the better players might consider hitting hybrid off the tee for safety because direction is more important than distance. If you are feeling brave, though, you can get it on for two if you do take driver and hit it dead straight. The green is easy to find as long as you avoid the bunker short right.



HOLE 7, 265 metres, par 4

Short dogleg left, where better players can actually reach the green from the tee as it plays about 240 metres from tee to green going the direct route. With out of bounds left and a water hazard on the right, the safer play is to take a mid-iron from the tee, leaving a wedge into the green. The putting surface is quite undulating, but this is a definite birdie chance.

HOLE 8, 343 metres, par 4

Good par 4. Don't flirt with the water hazard right and aim straight down the middle with driver, 3 wood or hybrid. Having avoided the lone fairway bunker you will be hitting into an elevated, undulating green. There is a pot bunker back left and another deep bunker front right and anything long or left spells trouble.

HOLE 9, 369 metres, par 4

Bit of a tricky hole. The fairway bunker on the right needs to be avoided if you hope to reach the green in two, so for average players it is best to lay up about 180 metres off the tee. The two-tiered green slopes from right to left and is protected by a bunker on the front left.

HOLE 10, 405 metres, par 4

Longish par 4. With fairway bunkers right and left you need to be pretty straight off the tee, leaving anything from a hybrid to a long iron into the green. There is a bunker on the right of the green, so better to aim left.

HOLE 11, 150 metres, par 3

Straight par 3, with a bunker front left. Avoid hitting it left, as it is almost impossible to get it up and down from there.

HOLE 12, 330 metres, par 4

Dogleg right par 4. It's only about 200 metres to the corner, so you may consider hitting a hybrid off the tee. Then it's straight uphill to a green that's bunkered on the right-hand side.

HOLE 13, 163 metres, par 3

Good par 3 with bunkers on the right. You can leave it short and still have a relatively easy up and down.





14

HOLE 14, 430 metres, par 5

Short par 5. Aim to hit it about 230 metres from the tee down the right centre of the fairway and thereby taking the two fairway bunkers on the left out of play. The second shot is uphill, but the better player can reach the green in two. There is a bunker to the left of a two-tiered green that slopes from back to front.



15

HOLE 15, 363 metres, par 4

Aim left of centre off the tee to miss the fairway bunker on the right from where it is almost impossible to reach the green. That should leave you with a mid-iron to a well-guarded green. The bunker at the front left you can see, but also beware the pot bunker back left that is not visible from the fairway.



16

HOLE 16, 132 metres, par 3

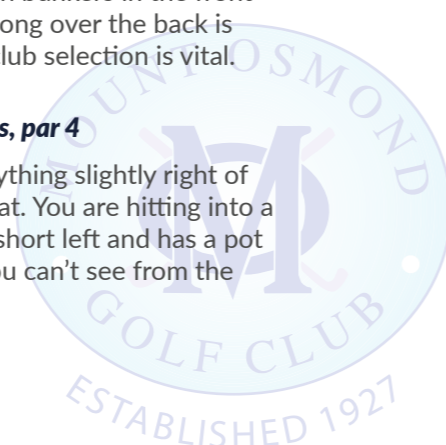
Beautiful little par 3 with bunkers in the front of the green. Anything long over the back is unplayable, so correct club selection is vital.



17

HOLE 17, 320 metres, par 4

Straight uphill par 4, anything slightly right of centre off the tee is great. You are hitting into a green that is bunkered short left and has a pot bunker back left that you can't see from the fairway.



HOLE 18, 472 metres, par 5

Par 5 to finish, with out of bounds all the way up the right-hand side. You also need to keep it left of centre to avoid the fairway bunkers down the right which come into play. From there, you can then either have a go at the green, ensuring you avoid the bunker on the right, or lay up to leave your favourite wedge distance. A birdie chance to finish the round.

PRO SHOP

The Mount Osmond Golf Club Pro Shop is the place to go to take care of all your golfing needs. The club's PGA Certified Professional, Ian Pritchard, was awarded the 2014, 2015 & 2016 PGA Professional of the Year at the Golf SA Industry awards.



Ian's philosophy is to price very keenly and wherever possible match or better his competitors. He stocks drivers, fairway woods, utility woods, irons, wedges and putters from the leading manufacturers. The superb practice area and wide range of demo clubs allow you to try clubs before you buy. Ian and his team are on hand to give you the advice and information you require to make sound buying decisions.

Even better, why not get your club or set of clubs made to fit your individual swing by taking advantage of the popular custom fitting service?

Many recreational golfers play with clubs which are ill-suited to their swing, but with a few simple measurements you could have your own purpose-built equipment. This service costs less than you think and can bring about a dramatic improvement in ball striking.

The professional team are committed to allowing you to get the most from your game and you can look the part too thanks to our wide selection of clothing.

Hand buggies and several excellent quality golf sets are available for hire. Should you prefer a more relaxing mode of transport, there are 15 motorised electric Club Car ride-on buggies also available for rent. Bookings are essential.

For more details, phone the Pro Shop (08) 8379 1674 or pop in and see us in person.



GAME IMPROVEMENT

If you have the commitment and desire to lower your handicap then our talented teaching professional Ian Pritchard will be delighted to help you achieve your goals.

Ian is a member of the Australian Professional Golfers Association and holds a level 3 qualification in golf coaching, the highest available. Vastly experienced, he is able to help players of all abilities, from beginners right through to scratch golfers.

Ian's teaching theory is to keep everything as simple as possible. This means that pupils learn to understand the fundamentals of their swing faster

and makes a proficient swing a reality, quicker. Whether a novice or seasoned player Ian can tailor coaching to your needs.

Video is also available if required and lessons can be emailed to pupils, giving a useful memory aid of what was being worked upon.

On-course playing lessons and group clinics are also available, both to members and visitors. To book your golf lesson, call the Golf Shop on (08) 8379 1674.

The club boasts some of the best practice facilities available locally. There is an all-grass covered driving range, two chipping and bunker areas, a fine practice putting green and some practice nets.

There are also nets for those short of time who need a couple of quick practice swings before heading to the first tee for that opening shot that can set the tone for the rest of the round.

ASSURED AESTHETIC SKIN CLINIC

IMMERSE YOURSELF IN OUR SPECIALISED TREATMENT



Our objective is to offer our customers the most advanced treatments in the field of skin health and wellness.

Our professionals have extensive experience in cutting-edge advanced aesthetic treatments, producing results using the most sophisticated technology and medical grade-aesthetic equipment available.

Discover Your Own Beauty
Book A Free 30-Minute Consultation



Our services: ———

- Skin Analysis
- LED Light Therapy
- LLL Laser Therapy
- Non - Surgical Facial Tightening
- High - Tech Mesotherapy
- Body Shaping Treatment
- Cellulite Treatment
- Skin Tightening
- Corrective Skincare
- Full Spectrum Infrared Sauna Sessions
- Salon services



BECOMING A MEMBER

Mount Osmond Golf Club has a range of memberships available to those wishing to become part of our friendly club. With frequent competitions, a picturesque course and outstanding facilities it represents an excellent choice for the discerning golfer.

Why play at a public course when you can enjoy all the benefits of a first class yet affordable members' club?

Whatever your age or ability and however busy you are, you should find a package to suit. Being a member also affords the chance to play in daily competitions. You will likely find that you play more frequently and with access to expert tuition from our Professional team and fine practice facilities your handicap should drop and the better you play the keener you will be to play your next round.

Mount Osmond Golf Club currently has adult memberships available in the 5, 6 and 7 day categories. Under 30 membership comes with 7-day playing rights and is open to young adults aged under 30.

The club looks to encourage engagement of the family unit through membership and offer increased flexibility with several different membership options. Our new Flexi Membership is a great way to get involved in the Club and the points based Membership allows you to play when you want.

Mount Osmond Golf Club offers several easy payment options and accepts payment in instalments for subscriptions.

Further membership information can be found on our website www.mogc.com.au. Details of current subscriptions are also available on our website. For more information, call (08) 8379 1673 or email membership@mogc.com.au



P: 0460 561 289 | E: aasc.aus@gmail.com
226 Magill Rd, Beulah Park SA 5067

www.aaskinclinic.com.au  

MEMBERS' GOLF

Mount Osmond represents an excellent choice of club for players searching for competitive golf in all its forms, with league fixtures, many trophies to battle for each year in the club's own prestigious competitions and much social golf on offer.



LOOKING FOR A REAL ALTERNATIVE?

For your Management Liability, Professional Indemnity & Business Insurance.



- SME Business Insurance
- Management Liability
- Directors & Officers Liability
- Professional Indemnity
- Cyber Insurance
- + many more

Call **8291 2300** (MGA Adelaide) and see how MGA can be put to work for you!

MGA20_21

MGA Branches
Australia wide

www.mga.com

MGA Insurance Brokers Pty Ltd
ABN: 29 008 096 277
AFSL: 244601



STANDING BY YOU

Mount Osmond is one of a select few clubs to offer competitions seven days a week. Here is a summary of the competitive golf you could be enjoying as a member here:

SATURDAY

Mixed competition

SUNDAY

Mixed competition

MONDAY

Mixed competition

TUESDAY

Men's competition
Women's competition
conducted from 12.30pm

WEDNESDAY

Women's competition
Men's competition conducted
from 12.30pm

THURSDAY

Mixed competition
During Daylight saving Twilight
Competition 3.30-5.30pm

FRIDAY

Mixed competition

Men, women and juniors all have a full program of golf and enter teams in their respective pennant competitions.

Currently, our men field teams in the A and B Divisions of the Golf SA pennant competition and our women in the A1, A3 and Cleek Divisions. All matches are played 'off the stick' except in Cleek where all games are Handicap Match Play with a handicap range of 18 to 28.

For women with a handicap in the 29-39 range, the Hickory Stick provides the chance to enjoy the thrill of representing the club in pennant competition.

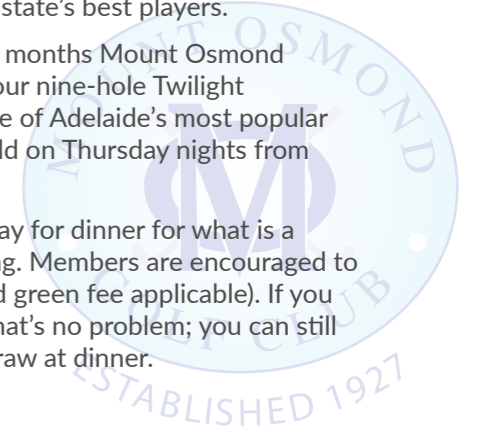
The seniors also get their chance with a five-round senior pennant being held in October and November.

Whether your favourite format is singles or pairs, strokeplay or matchplay, a one-day event to find the winner or a knockout competition running throughout the season you will find something to appeal at Mount Osmond. However the Club Championship, held in March/April for both the men and women, is the one they all want to win.

Mount Osmond is a proud host of annual rounds of the Vardon Trophy for Juniors, Women and Men, a series of events run by Golf South Australia throughout the year which draw some of the state's best players.

Throughout the summer months Mount Osmond is proud to play host to our nine-hole Twilight Competition which is one of Adelaide's most popular twilight competitions held on Thursday nights from 3.30pm.

Many golfers play and stay for dinner for what is a memorable social evening. Members are encouraged to bring a guest (discounted green fee applicable). If you don't have a handicap, that's no problem; you can still go into the lucky prize draw at dinner.



RECIPROCAL GOLF

Mount Osmond maintains reciprocal rights with a range of other clubs throughout Australia and overseas. Exact rights vary from club to club, more details can be provided upon application.

Members visiting the below mentioned clubs obtain relative privileges by presentation of a letter of introduction from the General Manager.

The clubs first listed below allow Mount Osmond members to play when visiting without payment of a green fee; except where their club members are charged a daily green fee. Transfer of membership may apply.

Mount Osmond maintains reciprocal rights with a range of other clubs throughout Australia and overseas. Exact rights vary from club to club, more details can be provided upon application.



AUSTRALIAN GOLF CLUBS

ACT

Murrumbidgee Country Club

Queensland

Carbrook Golf Club

Headland Golf Club

Pacific Golf Club (Mt Gravatt)

South Australia

Bordertown Golf Club

Keith Golf Club

Mt Gambier Golf Club

Port Lincoln Golf Club

Northern Territory

Alice Springs Golf Club

Victoria

Kew Golf Club

Warrnambool Golf Club

Western Australia

Melville Glades Golf Club

Royal Fremantle Golf Club

WA Golf Club (Yokine)

Tasmania

Kingston Beach Golf Club

New South Wales

Chatswood Golf Club

Cromer Golf Club

Griffith Golf Club

Kogarah Golf Club

Moore Park Golf Club

New Brighton Golf Club

OVERSEAS GOLF CLUBS

Paraparaumu Beach
Golf Club (NZ)

Keppel Club (Singapore)

Changi Golf Club
(Singapore)

Mission Hills (China)

*The following Clubs offer
Mount Osmond members
the ability to play with the
payment of a green fee:*

AUSTRALIAN GOLF CLUBS

Queensland

Redcliffe Golf Club

Townsville Golf Club

Northern Territory

Darwin Golf Club

Victoria

Murray Downs Golf
and Country Club

New South Wales

Barham Golf
& Country Club

Broken Hill Golf Club

Tocumwal Golf Club

OVERSEAS GOLF CLUBS

Springfield Golf Club
(Rotorua, NZ)

Kelab Golf Perkhidmatan
Awam (Malaysia)

Additionally, Mount
Osmond participates
in Club Advantage, an
expanded reciprocal
program between six
quality clubs in Adelaide.

*As an adult member
(in the 5, 6 or 7 day
categories) of Mount
Osmond you are able to
play three rounds at each
of the following clubs for
free each year:*

Blackwood Golf Club

Flagstaff Hill Golf Club

West Lakes Golf Club

Tea Tree Gully Golf Club

The Vines Golf Club







Howe Jenkin is a specialist family law practice situated in Adelaide's CBD.

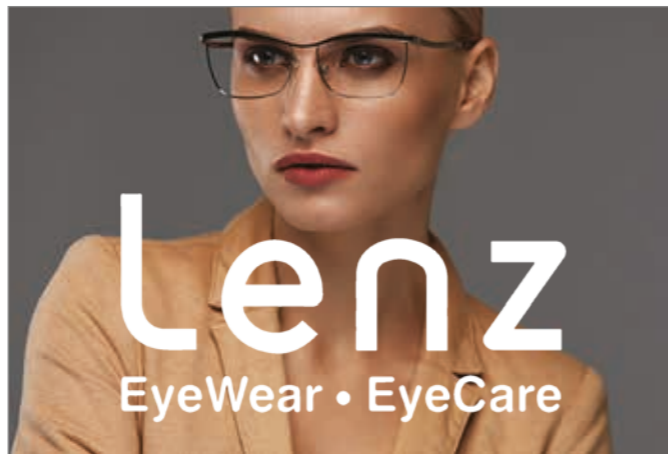
It has for many years been recognized in Doyles Guide as one of SA's pre-eminent family law practices and is known for providing commercially sensible, cost effective and timely advice in family law in particular in the areas of:

- ▶ **Property Settlement and Spousal Maintenance**
- ▶ **Financial Agreements**
- ▶ **Superannuation Splitting**
- ▶ **Children's issues including Parenting Arrangements and Child Support**
- ▶ **Divorce Applications; and**
- ▶ **Mediation of disputes generally.**



David Jenkin, a member of Mt Osmond Golf Club,

can be contacted on **8232 8422** or **0412 844 800** or by email djenkin@howejenkin.com.au



Lenz
EyeWear • EyeCare

Eye Exams | Contact Lenses
Ortho-K for Kids | Aviation Eye Tests
Glaucoma Tests | Designer Eyewear

Kai Yan
Optometrist

p. 08 8373 5662 e. optom.peter@gmail.com
a. 7/155 King William Road Unley SA 5061



lenzeyewear.com.au



BEGINNERS

Here at Mount Osmond we have a love for the game of golf and are keen to share our passion for this friendly, sociable outdoor pursuit with as many people as we possibly can.

We are committed to growing our sport and offer every incentive for beginners wishing to give golf a go. We hold Try Golf Clinics throughout spring and summer and these sessions teach people all they need to understand the game: the basic techniques, the rules and the etiquette, so that they do not feel out of place. This we do in a fun, inspiring and cost-efficient manner.

For more details, contact the Pro Shop on (08) 8379 1674 or email membership@mogc.com.au.



JUNIORS

Junior Membership is recognised as being important to the long term stability of membership at Mount Osmond Golf Club. We are committed as a club to providing our facilities for our young members to learn and play the game of golf and to learn the rules and course etiquette. Most importantly, though, the emphasis is on having fun.

Mount Osmond offers great value for money with the fees set low and family discounts may apply if one or more parents are also members.

Learning the basic fundamentals at a young age can ensure a lifetime's enjoyment of a wonderful outdoor pastime which also teaches children life skills such as etiquette, sportsmanship and abiding by the rules.

Junior Members are made to feel like they are part of the club and membership gives unlimited seven-day playing rights.

The Juniors enjoy competition throughout the year, with the highlight being the Club Championship. The top eight players from two qualifying rounds advance to the matchplay, which culminates in a final generally held towards the end of September.



Competitions are held daily with our main competition days being Saturday mornings (mixed), Tuesday mornings (men/boys), Wednesday mornings (women/girls).

Junior competition entry fees are very low and there is the chance to win excellent prizes especially in Twilight Golf played on Thursday afternoons and which is followed by dinner and presentations.

Our Junior members regularly participate in junior golf competitions including Vardon, state and national competitions with much success. We also hold club championships and family and social comps.

A Mount Osmond Junior pennant side plays in Division 2, between May and July, which features teams from metropolitan Adelaide golf clubs.

The club believes that encouragement and promotion of junior golf is an important part of the future of the club and golf in South Australia. A vibrant junior program adds vitality to the club and assists in attracting new members, juniors and their parents; it assists in promoting the club in the golfing and wider community as well as providing the club with enthusiastic adult members in the future.

To that end, the Mount Osmond Junior Golf Foundation has been established to facilitate the growth and development of the Junior Golf Program through donations from members and supporters.





www.bespokekitchens.net.au

VISITORS & GUESTS

Visitors are always welcome at Mount Osmond Golf Club, whether it be an enjoyable round of golf or for a relaxing lunch with a view.

We encourage members and their guests to enjoy the hospitality within the clubhouse in a relaxed and respectable way whilst maintaining the dignity of the club. The Member's Bar and Bistro Menu are open to all visitors and guests 10-4pm daily.

Guests and visitors are asked to acquaint themselves with the club's Dress Code. Clothing that is acceptable on the course is acceptable within the clubhouse.

The latest green fee rates are displayed on our website, www.mogc.com.au



BESPOKE KITCHENS ADELAIDE

CLUBHOUSE

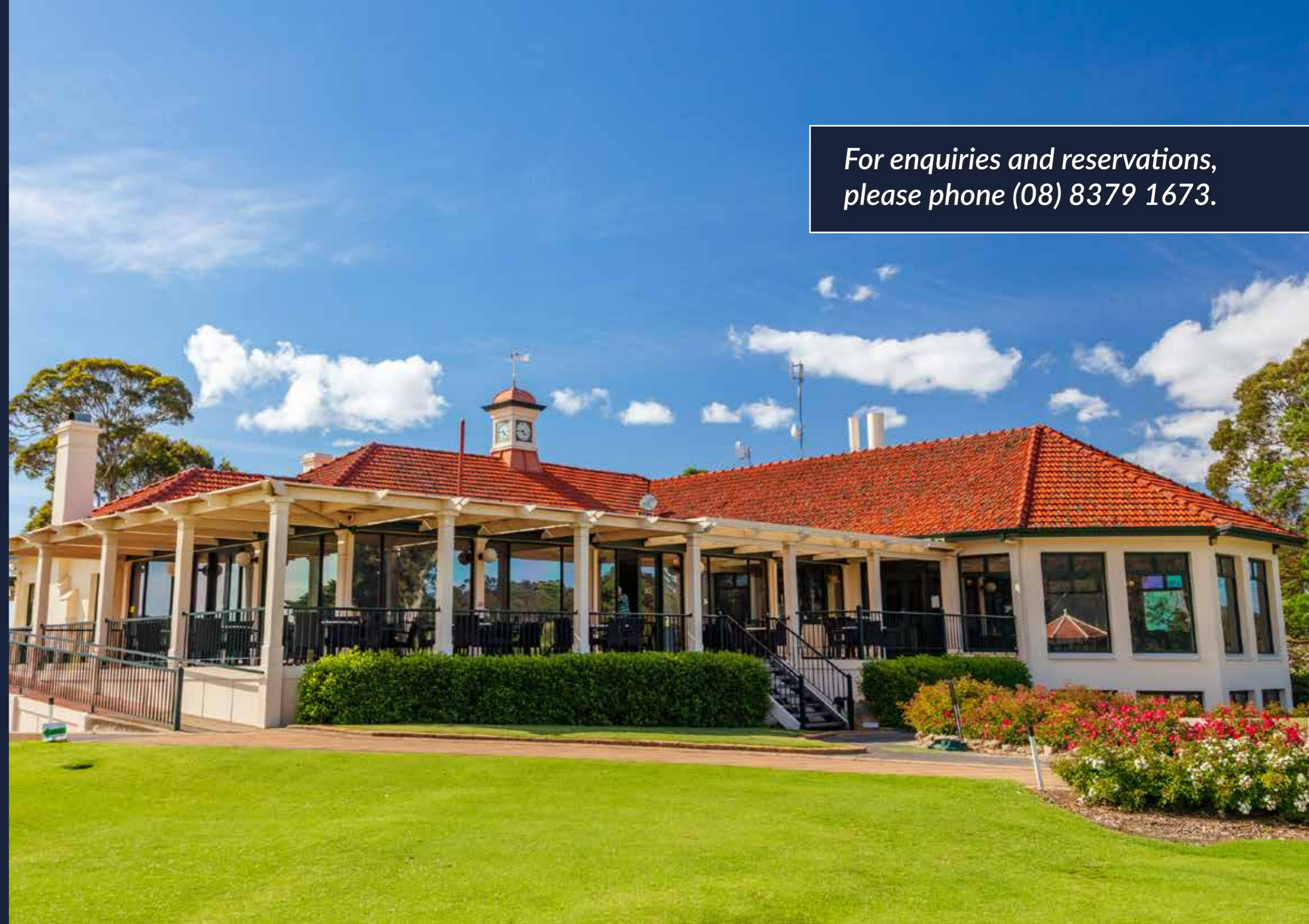
Our stylish clubhouse is full of character and offers great comfort and a welcoming atmosphere in which to socialise and relax either after a round of golf or as members of the club.

The bar is well stocked with a wide selection of beers, wines, and spirits and a choice of soft drinks. We welcome the general public and members alike to enjoy lunch and coffee in the clubhouse from 10-4pm every day and dinners by special appointment.

For special occasions and fine dining experience, our dining room opens on Sundays for full a la carte service. Our chefs are passionate about creating great food at accommodating prices, add an unbeatable setting and friendly club atmosphere and it is little wonder that bookings are essential to avoid disappointment. During the summer months, Twilight golf sees the clubhouse open for dinner from 6pm on Thursday evenings, which members and guests are encouraged to enjoy.

Wine & Dine evenings are held monthly at the club on Friday evenings, a most enjoyable way to end the working week and offering the chance to taste a range of wines and enjoy a tempting menu in the picturesque surroundings of our club.

*For enquiries and reservations,
please phone (08) 8379 1673.*



WEDDINGS & FUNCTIONS

Nestled in the Adelaide Hills, there can be few more spectacular locations to have your wedding ceremony and reception.

Mount Osmond Golf Club is a unique venue where you and your guests will have a memorable celebration in our heritage-style clubhouse surrounded by a beautiful natural environment. This stunning setting with magnificent views to the hills, coast and the city is only five minutes from the Toll Gate, easily accessible from all of Adelaide.

Our function rooms cater for events of any size or for any occasion (dinner, lunch, morning/ afternoon tea, conference and meetings, cocktail reception.) The charm and warmth of our lovely clubhouse with open fires in each room lends itself to be a perfect winter wedding venue.

Our menus feature fresh, local produce and the wine list showcases stunning Barossa, Hills and McLaren Vale vigneron. Our staff are skilled in providing a style of service that is professional and discrete yet attentive and friendly; the style of service you can rely on and trust.





All our packages are entirely flexible and we can shape your day to match your needs. From four-course sit-down meal to canapé functions, we can make sure your family get-together, birthday, engagement, wedding or retirement party will be one to remember.

Looking for a spectacular wedding venue? Look no further. To assist in making your day easier, a wedding at Mount Osmond includes:

- Complete room set up including linen table cloths and napkins
- Private room for the Bridal party to take some time out and freshen up
- Exclusive use of the venue after 7pm
- Personalised menus
- Gift table and cake table
- Microphone, lectern and smartphone compatible sound system
- Dance floor

Why not choose to spend the whole day with us? Mount Osmond is also able to accommodate

your ceremony in the grounds, amongst nature and with some of Adelaide's best views. Wedding ceremonies include red carpet, 30 white Americana garden chairs and registry table; you just have to provide the sunshine. With some of the most breath-taking views in Adelaide, Mount Osmond is also the perfect location to frame those lasting memories of your special day. We are only too happy to accommodate your wedding photography as our friendly staff chauffeur you around the course to the best locations.

As with everything at Mount Osmond, you will find our attitude professional but refreshingly flexible. We want your special occasion to be exactly how you want it to be, so simply ask if you have any special requests and we will do our very best to accommodate them.

Please contact our Functions Manager for more details or to make an appointment to view our facilities. Phone **(08) 8379 1673** or send an email to functions@mogc.com.au.



JAMES THREDGOLD

JEWELLER

Colour your world

Bespoke handcrafted designs coloured by your imagination.



BURNSIDE NORWOOD | T: 08 8219 7950 | W: jamesthredgold.com.au | Follow us @ [james_thredgold](https://www.instagram.com/james_thredgold)

OFFICIAL STOCKISTS OF





DO YOU SUFFER FROM STIFF OR SORE HIPS OR KNEES?

ADELAIDE'S ONLY ORTHOPAEDIC GROUP DEDICATED TO THE MANAGEMENT OF HIP AND KNEE PROBLEMS

EXCELLENCE IN ORTHOPAEDIC CARE.

- Urgent Care
- 24 Hour, 365 on-call service
- Hip Surgery
- Knee Surgery
- Arthroscopic Surgery
- Paediatrics
- Robotic Assisted Surgery
- Orthopaedic Trauma
- Orthopaedic Pelvic Surgery



Dr Robert Baird



Dr Andrew Morris



Dr Robert Fassina



Dr Justin Munt

WWW.AHKC.COM.AU | PH 08 7325 4800 | 3/120 Kensington Rd, Toorak Gardens SA 5065

Start enjoying your retirement plan today

We'll help you achieve your lifestyle goals, ensuring that investment risk and fees are minimised while diversification and tax mitigation are maximised...

"Golf is deceptively simple and endlessly complicated." A bit like wealth management and tax planning...

"Plus7FM - your financial caddie"

plus⁷
Financial Management

Book your complimentary meeting today

p.08 8130 5500

admin@plus7fm.com.au
www.plus7fm.com.au



CORPORATE GOLF DAYS

Mount Osmond Golf Club's award winning course is well prepared to host your corporate golf day competition, fundraising event or networking event.

No matter how small or large your group, the team at Mount Osmond will work with you to make your event enjoyable and successful for everyone involved.

A range of tee-off options are available, including single-tee, multi-tee or shotgun starts. Groups of more than 80 players have the added bonus of exclusive use of the golf course.



parklands dental

Dr Aashul Patel
BDS Adel

Dr Michelle Spiel
BDS Adel

Dr Sophie Andrews
BDS Adel

Claire Damin
BOH Adel

Emily Reinig
BOH Adel

HCF

nib first
choice

Bupa
Members First
Platinum

**We accept all
health funds**



**Dr Aashul Patel would like to
welcome fellow Mt. Osmond Golf Club
members to the practice.**

- Family Dentistry
- Invisalign Orthodontics
- Cosmetic Dentistry
- Comprehensive General Dentistry
- Dental Implants

p. (08) 8331 3945 | www.parklandsdental.com.au
41 Glen Osmond Rd Eastwood

To assist in making your day easier, a Corporate Golf Day at Mount Osmond includes:

- Professional coordination of your day
- Hole allocation to best suit the size of your group to maximize player enjoyment
- Welcome and introduction to the club to all your guests prior to tee off
- Nearest the pin, long drive, straight drive and other novelty markers
- Course directional maps
- Registration table
- Score cards
- Erection of sponsor signage on course
- Prize table
- Microphone, lectern & screen
- Use of fully-equipped locker rooms



Below are two examples of our most popular packages. Mount Osmond Golf Club has a diverse range of catering options from 2 course menus, cocktail style catering and carveries. To find out more please don't hesitate to contact our friendly staff to make these arrangements.

MORNING TEE TIME

- Green fees**
- Continental breakfast at registration**
- Freshly brewed tea, coffee & orange juice**
- Piece of fruit and bottle of water to take on course**
- Gourmet 2 course lunch**

AFTERNOON TEE TIME

- Green Fees**
- Chef selection of baguettes at registration**
- Freshly brewed tea, coffee & orange juice**
- Sausage sizzle on course**
- Roast Carvery dinner**



Catering is an important part of any successful golf day and here again, Mount Osmond will not disappoint.

Menu options include:

- Sausage sizzle/bacon and egg muffins
- Chef selection of gourmet sandwiches or baguettes
- Two course dinners accompanied by cheese platters
- Carvery with seasonal vegetables and salads

On-course beverages and snacks can also be provided. Signage is also permitted on the course.

We have a number of electric golf carts available for hire (pre-booking essential) and sets of right and left-handed clubs available for hire. Our professional staff can assist you with the running of your day from registration to score collation to ensure that you have a successful and hassle-free day.

Our Club Professional is available for group or individual lessons and a group clinic before your party take to the course can be an excellent icebreaker and put them in the mood for the thrilling golfing challenge that awaits.

Our Professional team can also arrange corporate merchandise (golf shirts, towels, golf balls etc) as giveaways for your day. These help people associate an excellent day with your company and provide great advertising for many months and years to come. Prizes can also be purchased from the Pro Shop. For further information contact Ian Pritchard on (08) 8379 1674.



TAXATION SPECIALISTS WITH OVER 20 YEARS EXPERIENCE



We are a full service accounting firm based in Adelaide, South Australia.

We specialise in providing taxation and business services to SME's, individuals and self managed superannuation funds. Our experienced Chartered Accountants provide you with "big business" technical solutions at a very reasonable price.

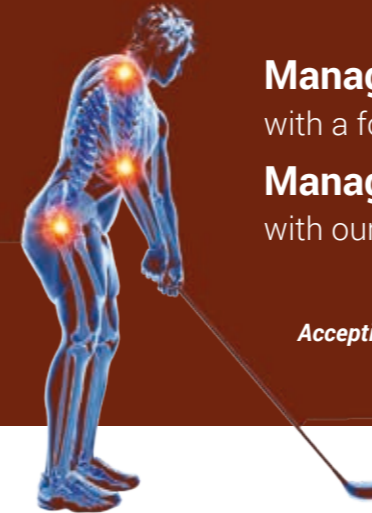
**No Outsourcing!
All work proudly done in Adelaide**

- P.** 1300 043 172
- E.** info@mcgaccountants.com.au
- A.** Adelaide Office
Level 3, 169 Fullarton Road
Dulwich SA 5065



REN PHYSIOTHERAPY AND LYMPHOEDEMA CLINIC

ph: 0422 460 338
admin@renphysiotherapy.com
www.renphysiotherapy.com
(By appointments only)



Management of Acute and Chronic Sports Injuries

with a focus on Preventative Rehabilitation to Return to Sport

Management of Lymphoedema

with our Lymphoedema Specialist

Accepting all Private Health Insurance Funds

Our Physiotherapists offer you an uncompromised service to help you actualise your goals.

Our Physiotherapist Eric Fong has been managing sporting injuries in the areas of Football, Golf and Tennis in the past 5 years. He takes his time to assist clients with identifying functional and muscular pattern anomalies which undermine the desired gait or movement and rectifies it with Manual Therapy, Dry Needling, Exercise Therapy and Hydrotherapy.

Eric is also an Accredited Lymphoedema Practitioner with a keen interest in assisting people with all levels of oedema, to live life unhindered and to continue in their line of work or sports of their choice.

Current involvements:

Vinnies Men's Crisis Centre
Hectorville Football Club
Mount Osmond Golf Club



Australasian
Lymphology
Association



Special Offer for M.O.G.C Members

20% OFF
Initial Consultations

10% OFF
Subsequent Consultations



CONTACT US & FIND US

LOCATION

The breath-taking panoramic views of the Mount Osmond Golf Club are less than 12 km from Adelaide's CBD and only 5 minutes from the Toll Gate.

DIRECTIONS

Take the Mount Osmond exit left off the South Eastern freeway. Our entrance is at the top of the hill on the right.

CONTACT INFORMATION

Mount Osmond Golf Club
60 Mount Osmond Road
MOUNT OSMOND SA 5064

Clubhouse

Phone: (08) 8379 1673
Fax: (08) 8379 0434
Email: info@mogc.com.au

Functions & Weddings

Phone: (08) 8379 1673
Email: functions@mogc.com.au
Website: www.mogc.com.au

Pro Shop

Phone: (08) 8379 1674
Fax: (08) 8338 0233



www.mogc.com.au

